

Air Emissions and Pollution Management

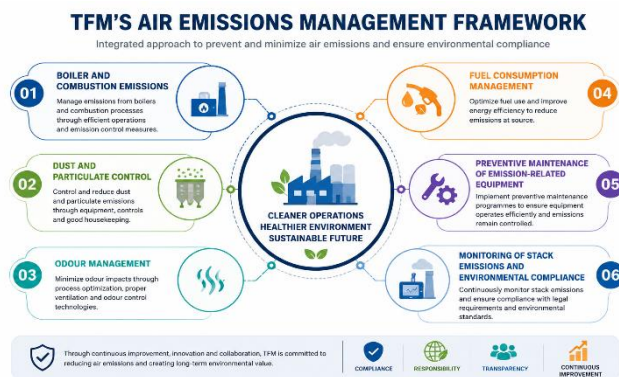
TFM is committed to preventing and minimizing air emissions and environmental pollution from its operations through responsible environmental management, operational controls, monitoring programs, and continuous improvement initiatives.

The Company manages air emissions in accordance with:

- Applicable environmental laws and regulations
- Thai Union Group Environmental Guidelines
- Internal SHE management requirements
- Pollution prevention and operational control programs

TFM's air emissions management framework covers:

- Boiler and combustion emissions
- Dust and particulate control
- Odor management
- Fuel consumption management
- Preventive maintenance of emission-related equipment
- Monitoring of stack emissions and environmental compliance



Air emissions are monitored and managed through operational controls, maintenance programs, engineering improvements, and periodic regulatory monitoring.

To strengthen transparency and accessibility of environmental governance, TFM has published its Air Emissions and Pollution Prevention procedures under the Company's SHE Policy framework, aligned with Thai Union Group's SHE Policy and environmental management principles. The disclosure consolidates the Company's commitments, responsibilities, operational controls, and pollution prevention principles related to air emissions and environmental compliance.

The procedure includes commitments to:

- Compliance with environmental regulations
- Prevention of air pollution and nuisance impacts
- Continuous reduction of operational emissions
- Improvement of resource and energy efficiency
- Monitoring and reporting of environmental performance
- Continuous improvement and environmental stewardship

Waste Management and Resource Efficiency

TFM is committed to reducing waste generation and improving resource efficiency across operations through the application of circular economy principles, waste minimization practices, and responsible material management.

Waste and resource management programs cover:

- Waste segregation and recycling
- Reduction of waste sent to landfill
- Food and raw material loss reduction
- Hazardous waste management
- Water conservation
- Energy efficiency initiatives
- Resource optimization in manufacturing operations

The Company manages waste in accordance with:

- Applicable legal requirements
- Internal environmental management standards
- Thai Union Group sustainability and circular economy commitments

Waste Reduction Targets and Progress

TFM is committed to reducing waste generation and minimizing waste sent to landfill through resource efficiency initiatives, waste segregation, recycling programs, operational improvement projects, and circular economy practices.

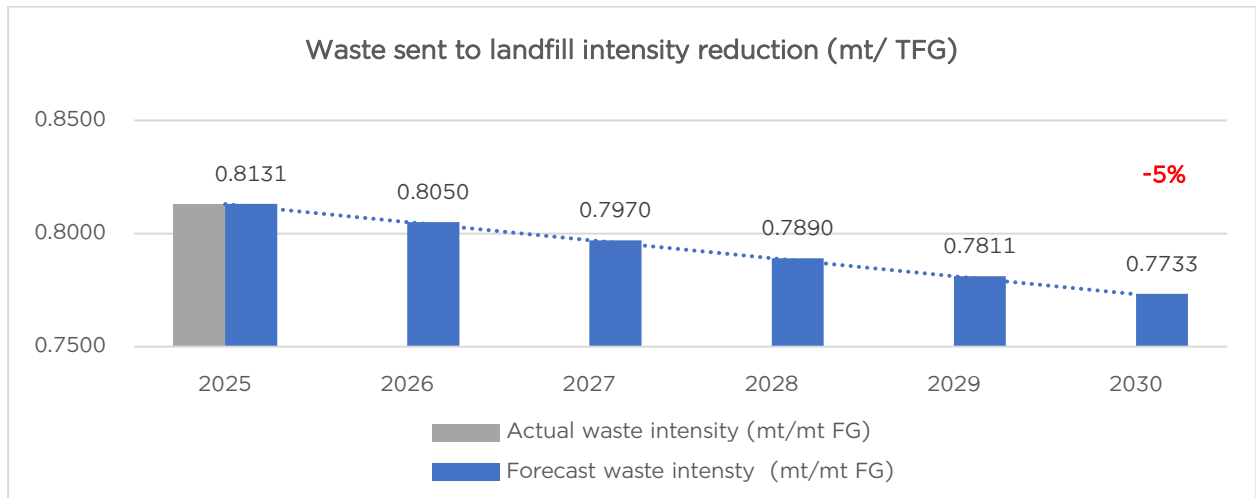
Waste Generation Data

Waste Management	Unit	2023	2024	2025
Diverted from disposal, e.g. reuse, recycling, composting etc.				
Non-hazardous waste	kilogram	929,490	878,940	767,436
Hazardous waste	kilogram	115,590	299,923	236,468
Directed to disposal, e.g. incineration with or without energy recovery, and landfill				
Non-hazardous waste	kilogram	715,350	155,475	142,410
Hazardous waste	kilogram	6,170	2,090	1,377

Between 2023 and 2025, TFM continued to strengthen waste management and resource efficiency across its manufacturing operations through waste reduction initiatives, operational improvements, and circular economy practices.

Despite ongoing production activities and operational growth, the Company maintained its focus on minimizing waste generation and reducing waste sent to landfill through continuous improvement programs and operational controls.

The Company has established a waste-to-landfill intensity reduction target aligned with its environmental management and continuous improvement objectives.



TFM’s long-term target is to achieve a 5% reduction in waste sent to landfill intensity by 2030 compared with the 2025 baseline.

The reduction pathway is supported through:

- Waste minimization and segregation programs
- Recycling and material recovery initiatives
- Process efficiency improvements
- Reduction of production losses and material waste
- Improved waste handling and disposal management
- Employee awareness and operational engagement programs

Progress against waste reduction targets is monitored regularly through the Company’s environmental management system and reviewed as part of SHE performance monitoring and continuous improvement processes.

The waste reduction target and annual progress are disclosed publicly to strengthen transparency, accountability, and environmental performance tracking.

Non-GHG Air Emissions Targets

TFM recognizes the importance of managing non-greenhouse gas (non-GHG) air pollutants, including sulfur oxides (SOx), nitrogen oxides (NOx), and particulate matter (PM), to minimize environmental and community impacts from operations.

As part of its air emissions reduction strategy, TFM has phased out coal usage from operations and transitioned to cleaner fuel alternatives to reduce sulfur oxide (SOx) emissions and improve overall air quality performance.

This transition supports:

- Reduction of SOx emissions associated with coal combustion
- Lower particulate and dust emissions
- Improved operational environmental performance
- Compliance with regulatory air emission requirements
- Alignment with Thai Union Group environmental and climate commitments

Through the coal phase-out initiative, TFM targets:

- Coal-free operations eliminating 30% of SOx emissions associated with coal usage by 2030
- Nitrogen oxide (NOx) emissions, TFM conducts periodic stack emission monitoring in accordance with applicable local regulatory requirements and ensures that 100% of NOx emissions from all combustion sources remain within the prescribed legal limits.
- Continued reduction of particulate and combustion-related air pollutants

Additional non-GHG air emissions management measures include:

- Preventive maintenance of boilers and combustion systems
- Stack emission monitoring and regulatory testing
- Fuel efficiency improvement programs
- Dust and odor control measures
- Engineering and operational improvement initiatives

TFM continues to evaluate opportunities to further reduce non-GHG air pollutant emissions through cleaner energy adoption, operational optimization, and environmental improvement programs.

Land Use and Deforestation

TFM's manufacturing operations do not involve direct land conversion, deforestation, or habitat clearance activities. TFM's operational footprint is confined to established industrial sites, and the Company has no plans to expand into or develop new land that would require conversion of natural habitats or forested areas.

In recognition that TFM's primary land use impact occurs through the sourcing of plant-based raw materials for aquafeed production, the Company has adopted Thai Union Group's Policy on No Deforestation and Conversion (DCF) as a binding requirement across its supply chain. Under this policy:

All plant-based raw materials — including soy, palm, and other agricultural commodities — must present low risk of deforestation and land conversion.

TFM conducts supply chain due diligence using the DCF policy framework to verify that raw materials do not originate from areas associated with deforestation or the conversion of ecologically important landscapes.

TFM sources certified deforestation-free soy in alignment with the Farm-level Environmental Assessment Framework for Certification (FEFAC) guidelines, and is engaged in the responsible palm oil sourcing pathway through Thai Union Group's process toward RSPO membership.

Progress against these supply chain land use commitments is monitored through supplier assessments and reported at Thai Union Group level as part of the SeaChange 2030 responsible agriculture commitments, within which TFM's sourcing volumes are included.